



Beaufort County Public Works

Stormwater Infrastructure

Project Summary

Project Summary: Sawmill Forest Subdivision - Chipwood Lane

Narrative Description of Project:

Repaired sinkhole.

Completion: Nov-10

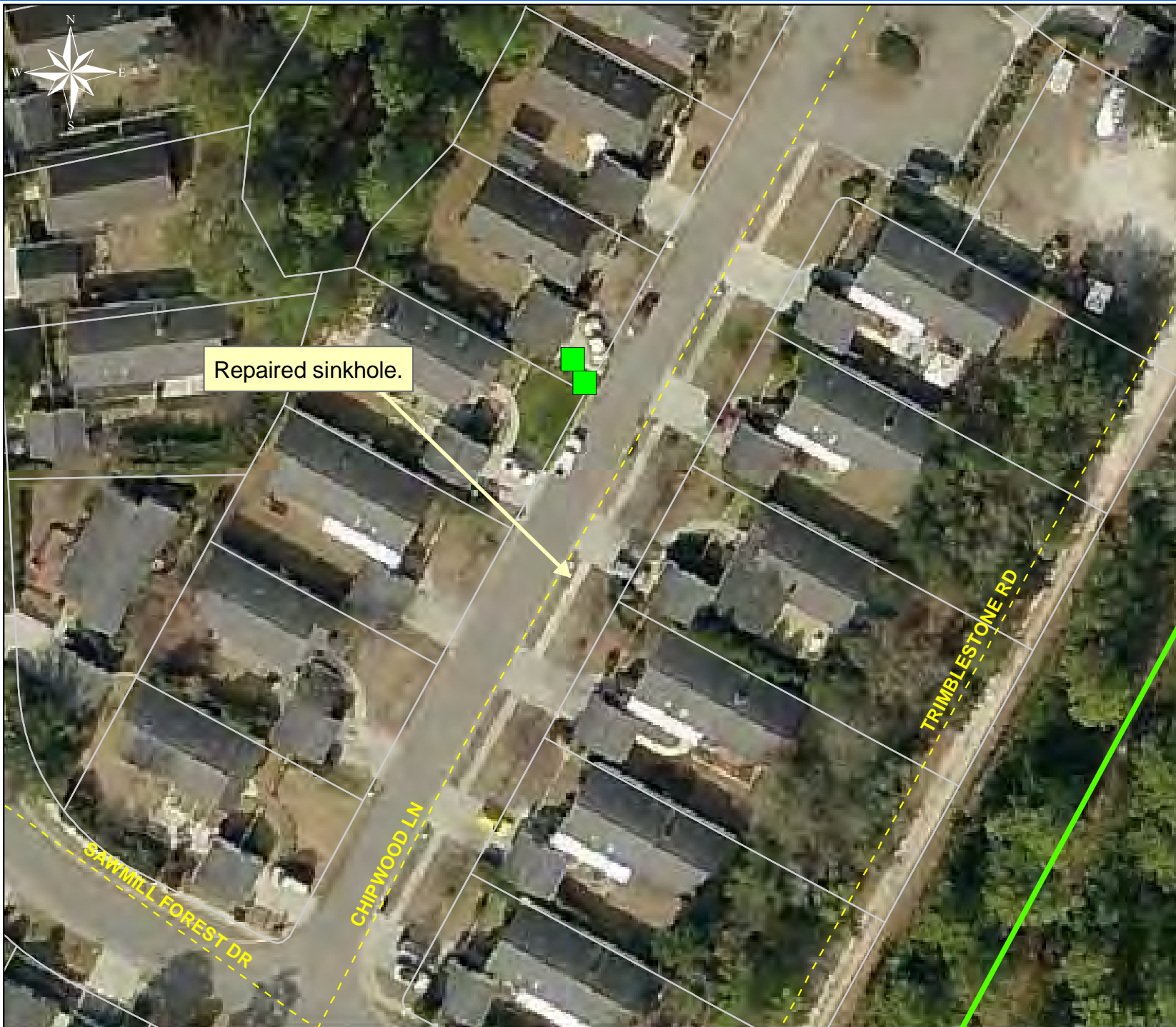
2011-516 / Sawmill Forest Subdivision	Labor Hours	Labor Cost	Equipment Cost	Material Cost	Contractor Cost	Indirect Labor	Total Cost
AUDIT / Audit Project	0.5	\$10.24	\$0.00	\$0.00	\$0.00	\$0.00	\$10.24
COMP / Compile Project	0.5	\$10.24	\$0.00	\$0.00	\$0.00	\$0.00	\$10.24
PCAM / Pole Camera System	9.0	\$192.75	\$24.72	\$20.70	\$0.00	\$0.00	\$238.17
PRRECON / Project Reconnaissance	30.0	\$623.80	\$262.80	\$74.45	\$0.00	\$0.00	\$961.05
UTLOC / Utility locates	1.0	\$20.48	\$0.00	\$0.00	\$0.00	\$0.00	\$20.48
Indirect Labor, Services and Supplies	0.0	\$0.00	\$0.00	\$0.00	\$0.00	\$978.91	\$978.91
2011-516 / Sawmill Forest Subdivision Sub Total	68.0	\$1,461.31	\$427.16	\$199.34	\$0.00	\$978.91	\$3,066.72
Grand Total	68.0	\$1,461.31	\$427.16	\$199.34	\$0.00	\$978.91	\$3,066.72

Before



After





Project:
Sawmill Forest
Subdivision -
Chipwood Lane

Activity: Drainage
Maintenance

Project #:
2011-516

Township:
Bluffton

Completed:
November 2010

Legend

Drainage Type

- River
- Stream
- Outfall
- Lateral
- Lateral Pipe
- Roadside
- Roadside Pipe
- Road Pipe
- Crossline
- D/W
- Access
- Piped
- Bleeder
- Parcels



1 inch = 53 feet